

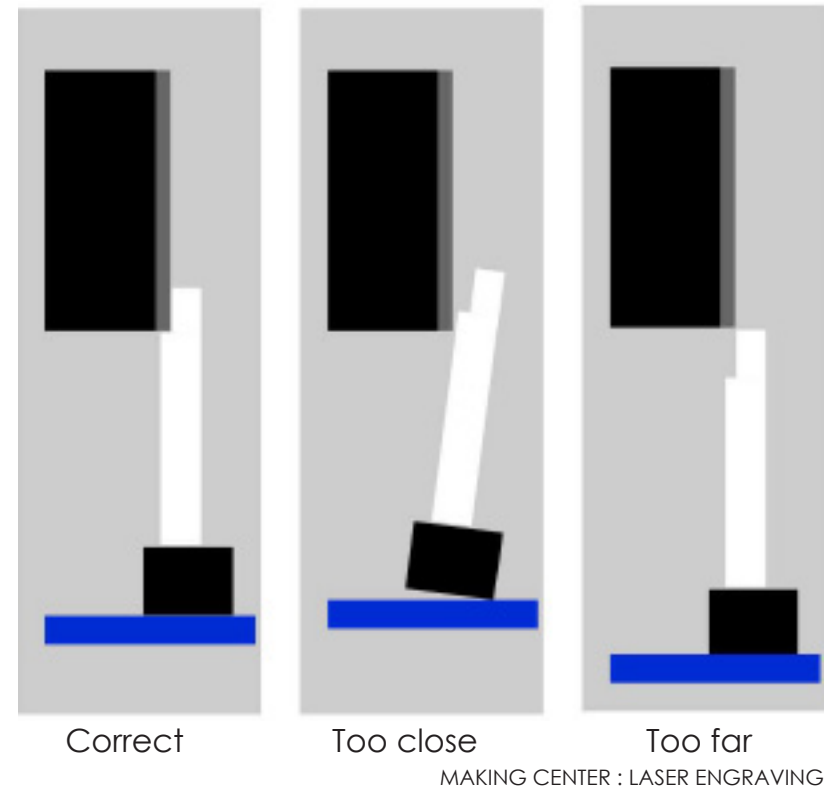
Setting up the machine

1. Turn on the compressor.



2. Place material on the laser bed (flat).

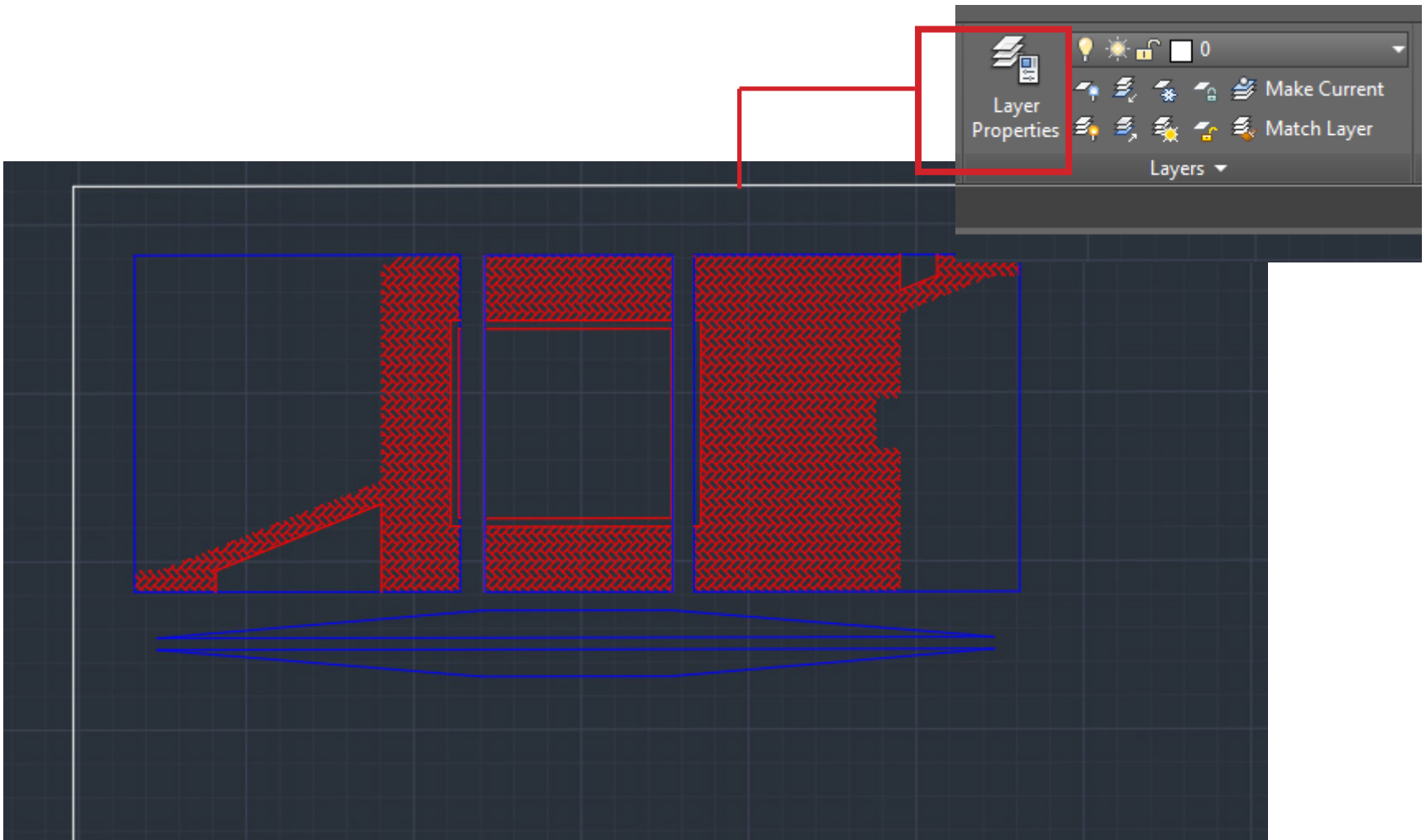
3. Focus the height according to material thickness.



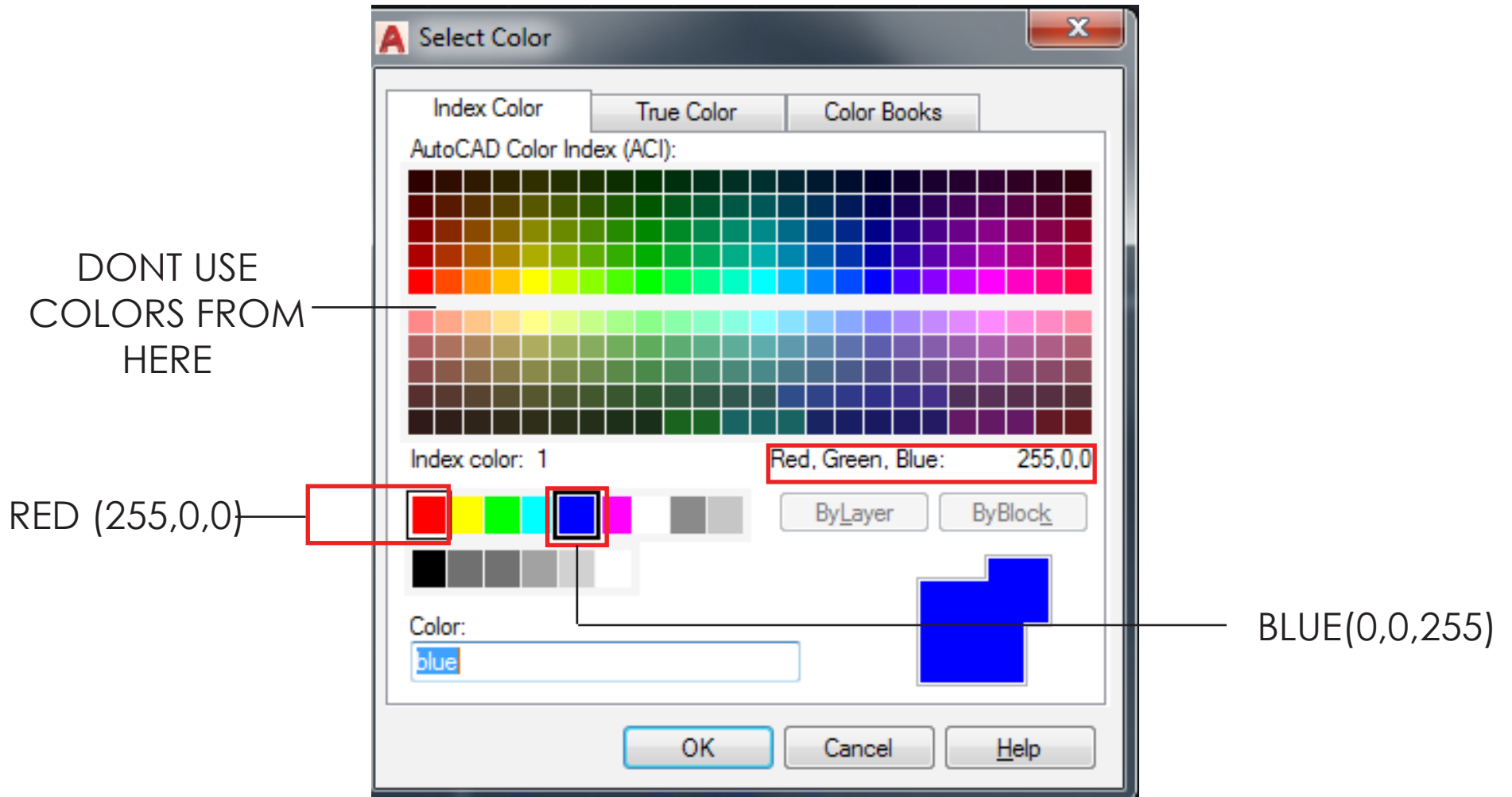
Preparing your file in AutoCAD

Working from “Model Space”

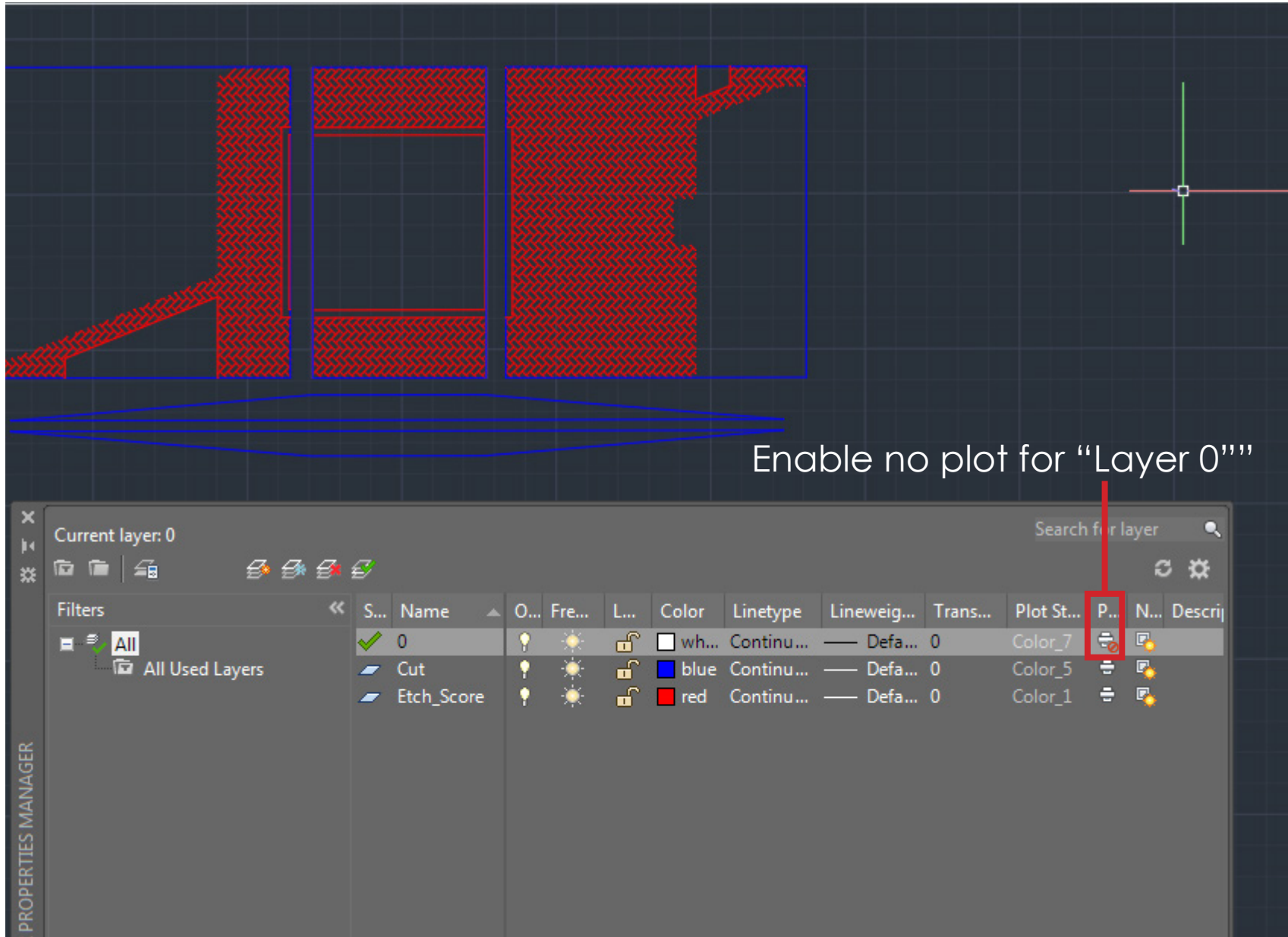
1. Draw an outline that is 18 in High x 24 in Wide.
2. Place the outline border in Layer 0”
3. Use separate layers for Cut and Etch.



4. Use RGB format color as located in the color selection tool of AutoCAD.

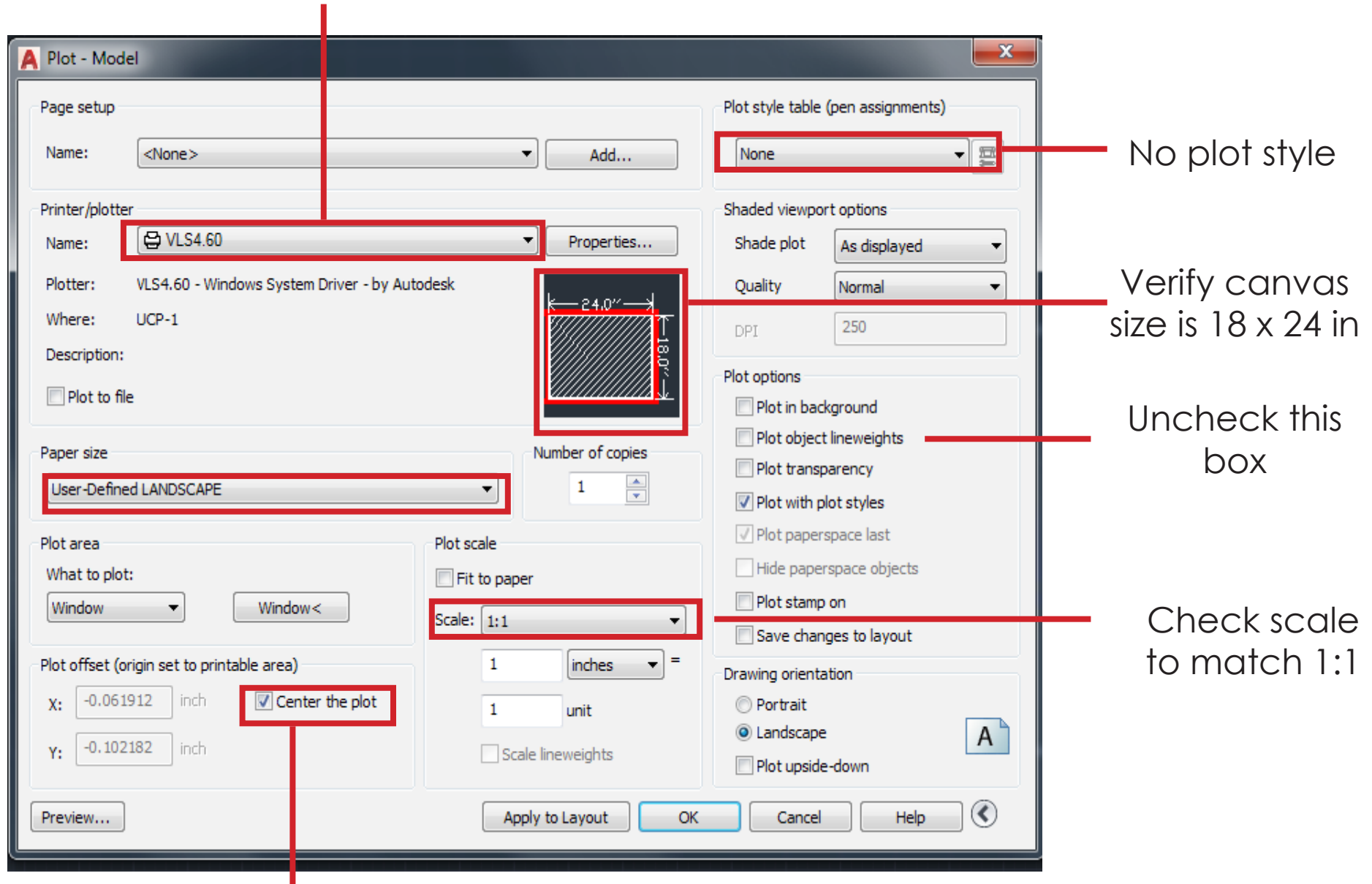


5. Assigning layers and colors in Layer Properties Manager
6. All lines should have default Lineweight. Do not assign 0.00 as a lineweight.



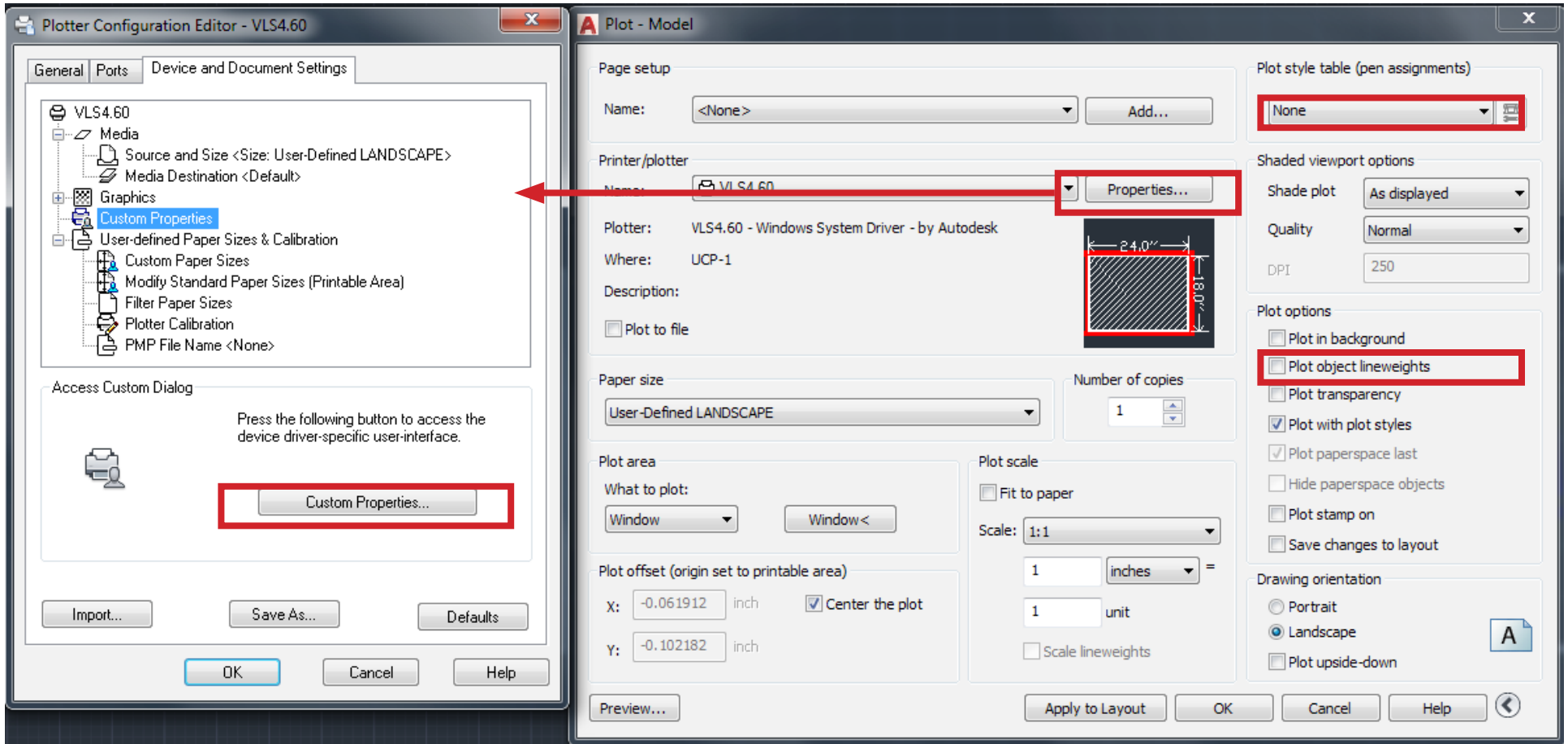
7. Plot the file .

8. Assign plotter as ““VLS4.60”” for red machines and “V460 “for Grey machines.

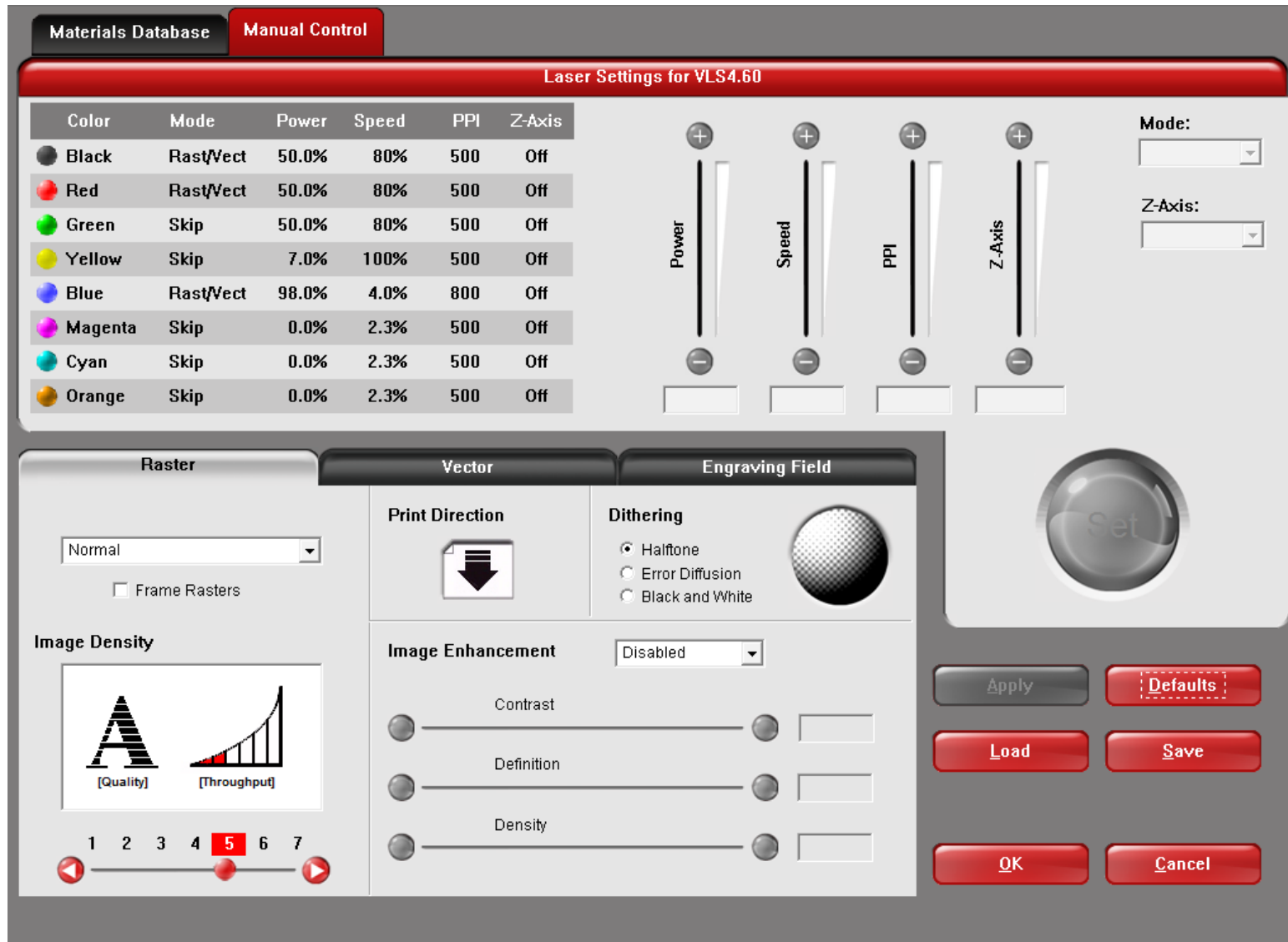


Check this box

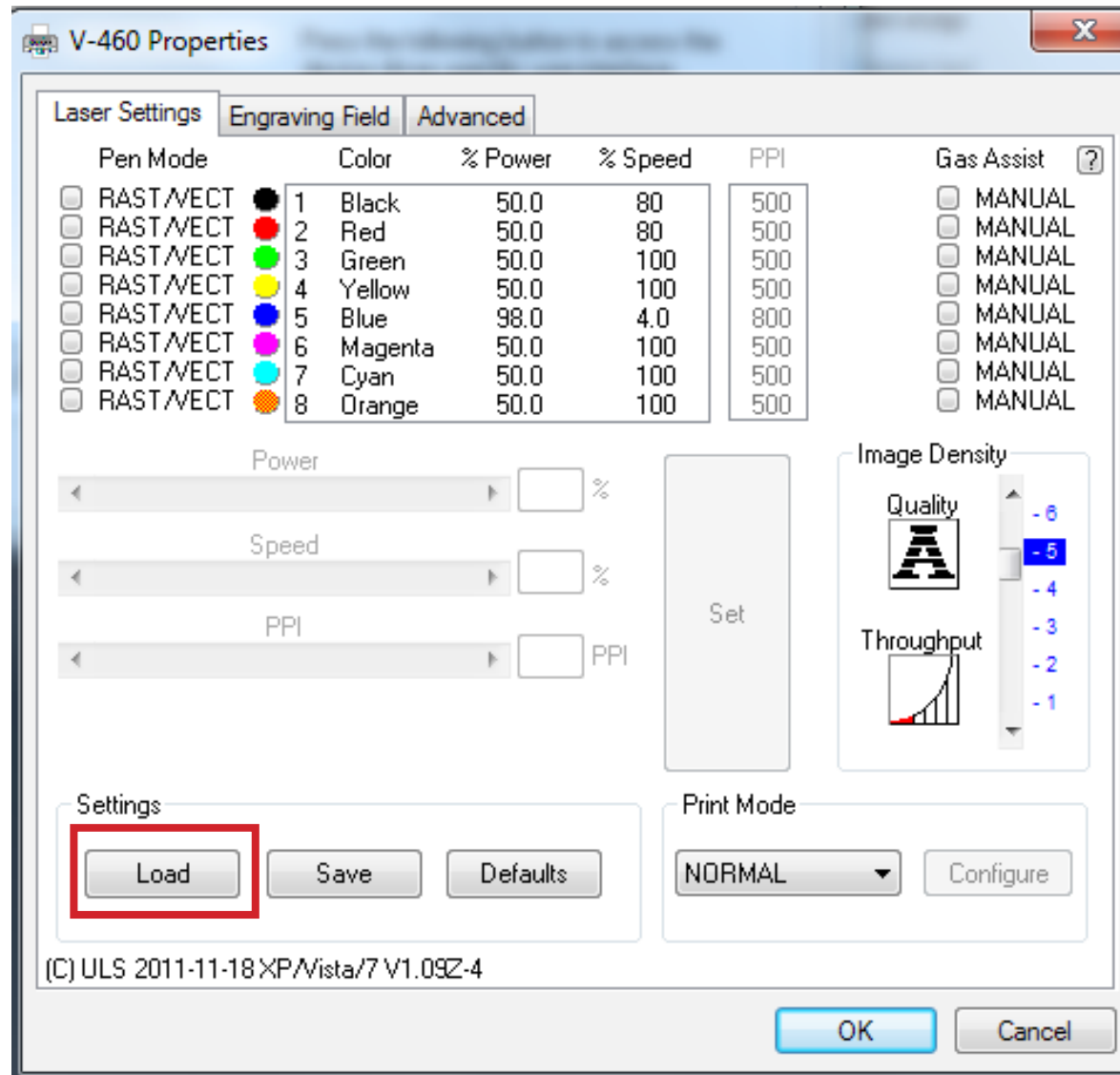
9. Click on properties
10. Then click on Custom properties.



11. If your using the red machine, the following interface should open up.
12. Choose a material profile by pressing “load”



11. If your using the grey machine, the following interface should open up.
12. Choose a material profile by pressing ““load””



For cuts use the Blue(0,0,255).
13. Click Set

Materials Database **Manual Control**

Laser Settings for VLS4.60

Color	Mode	Power	Speed	PPI	Z-Axis
Black	Rast/Vect	50.0%	80%	500	Off
Red	Rast/Vect	50.0%	80%	500	Off
Green	Skip	50.0%	80%	500	Off
Yellow	Skip	7.0%	100%	500	Off
Blue	Rast/Vect	98.0%	4.0%	800	Off
Magenta	Skip	0.0%	2.3%	500	Off
Cyan	Skip	0.0%	2.3%	500	Off
Orange	Skip	0.0%	2.3%	500	Off

Power Speed PPI Z-Axis

Mode: [Dropdown]
Z-Axis: [Dropdown]

Raster **Vector** **Engraving Field**

Normal [Dropdown]
 Frame Rasters

Image Density

[Quality] [Throughput]

1 2 3 4 **5** 6 7

Print Direction [Icon]

Dithering

- Halftone
- Error Diffusion
- Black and White

Image Enhancement [Disabled] [Dropdown]

Contrast [Slider]

Definition [Slider]

Density [Slider]

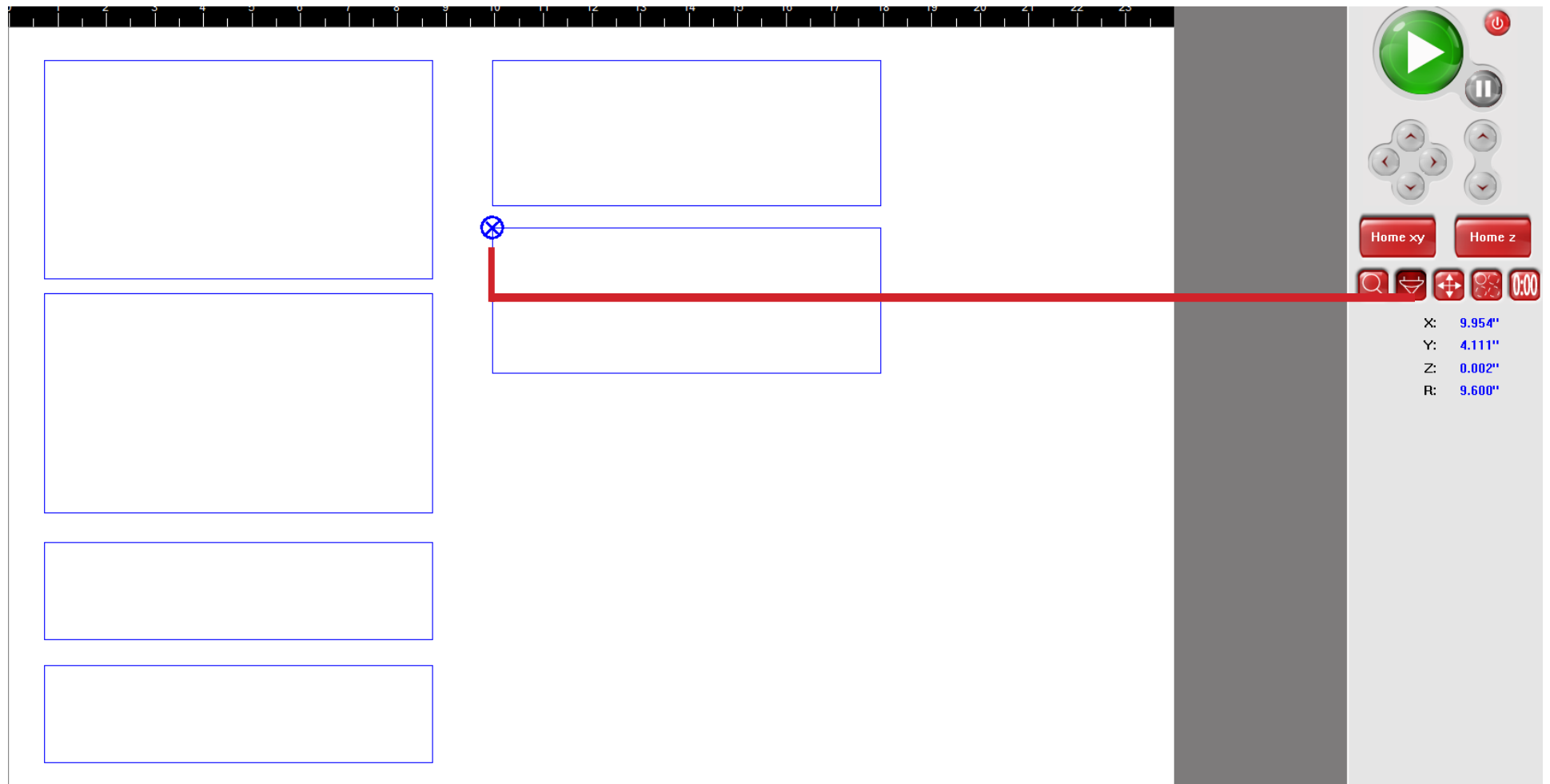
Set

Apply Defaults

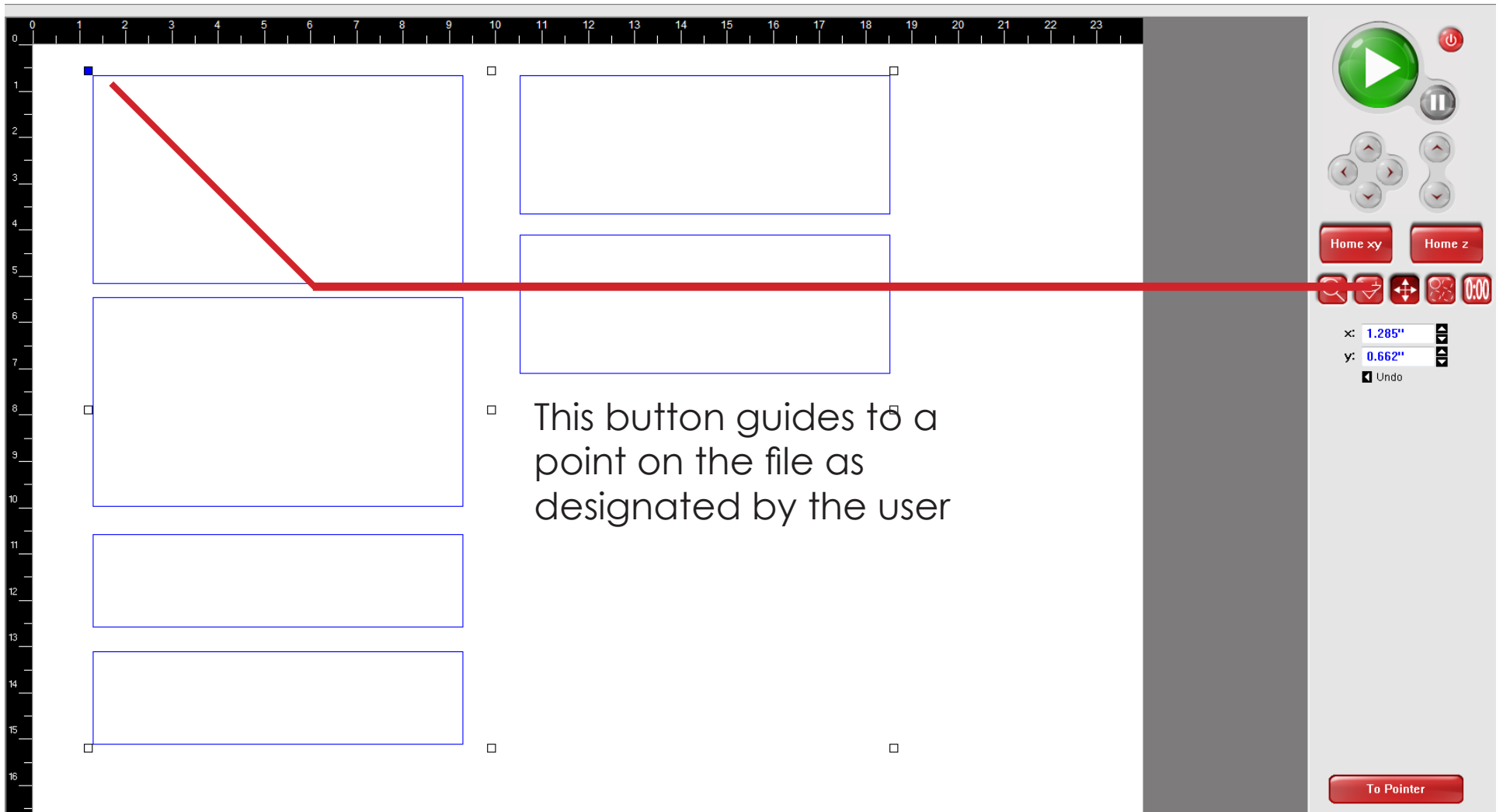
Load Save

OK Cancel

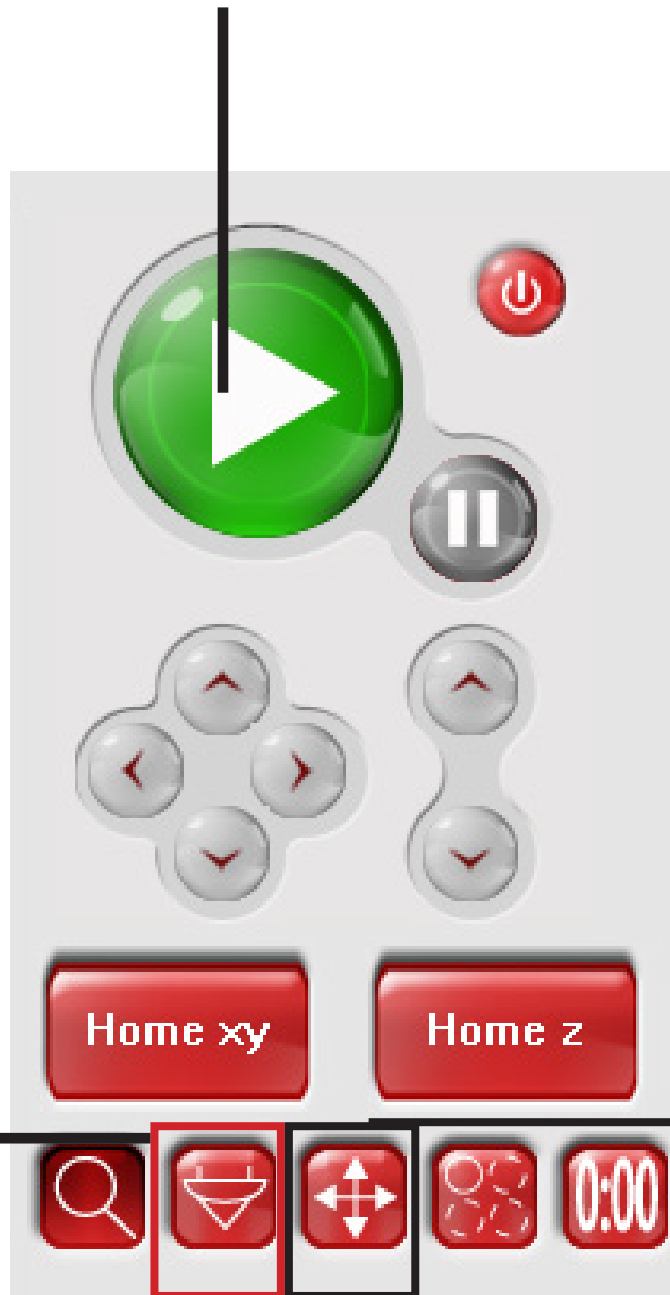
14. This button guides to a point on the file as designated by the user



15. Use this to move artwork if too close to the edge.
Left click and move art work around the canvas.



16. Click start if your ready.



This button guides to a point on the file as designated by the user

Use this to move artwork if too close to the edge.